

# KM Kiosk

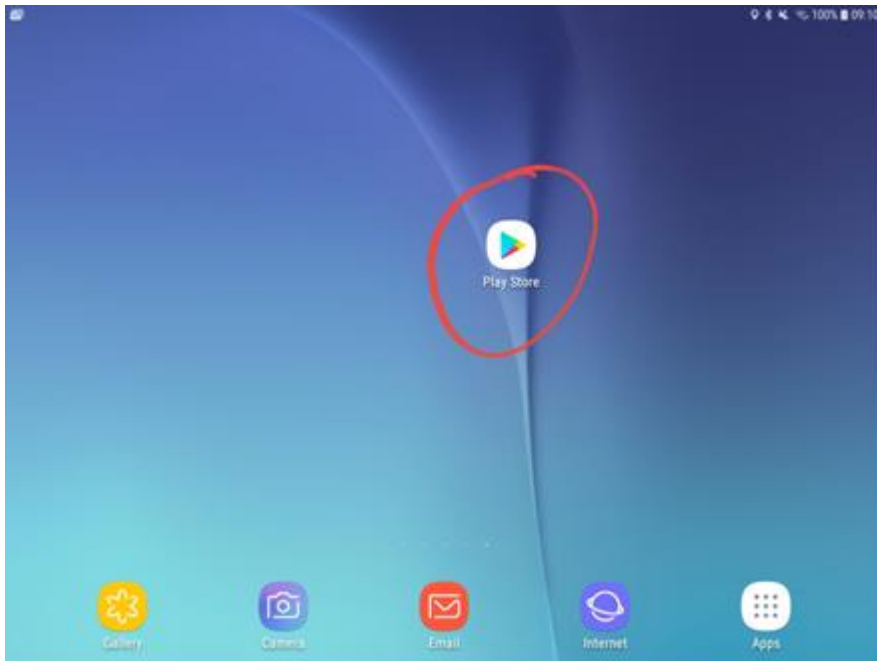
## How to Download, Install and Initial Setup



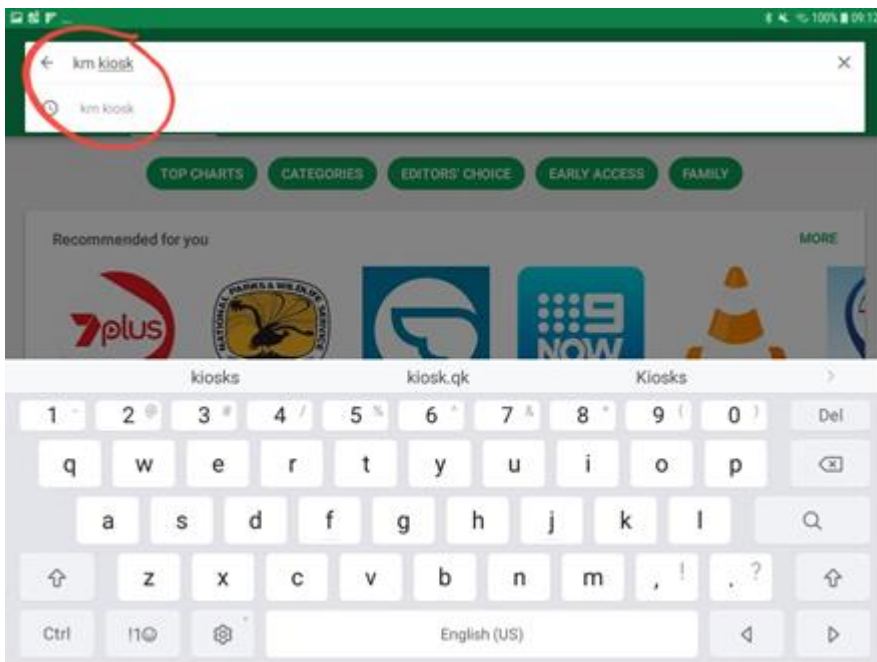
To assist users we have included step by step download and installation instructions for both Android Tablets and iPad devices.

# Samsung Tablet (and other Android Tablets)

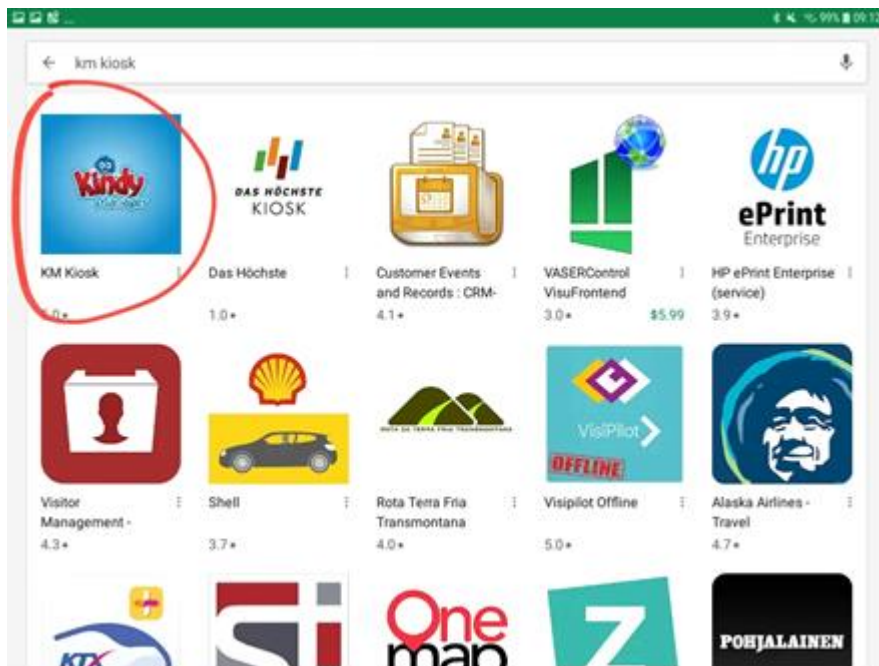
**Step 1:** Locate and Open your Tablets Play Store.



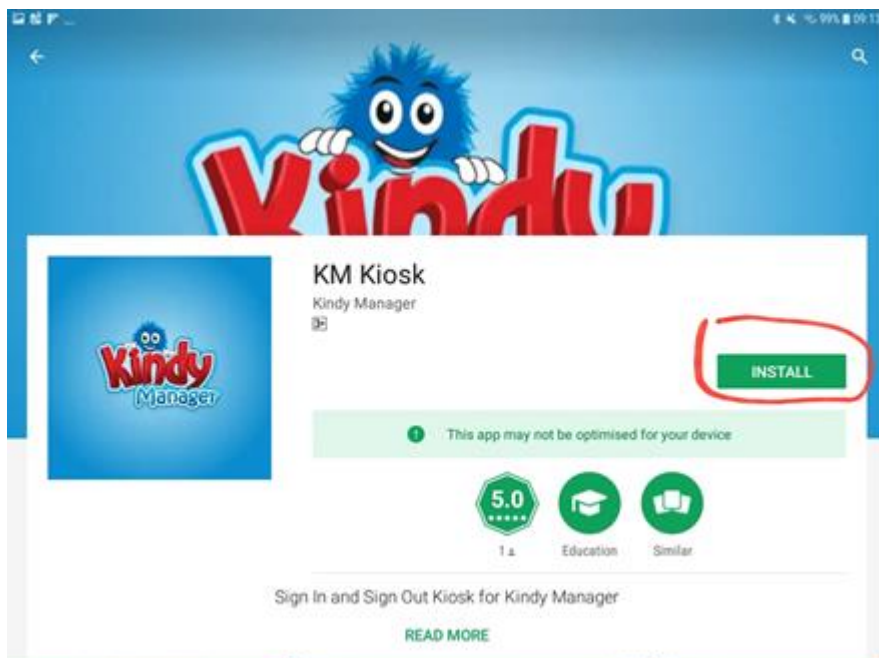
**Step 2:** Search “KM Kiosk” to locate the Kindy Manager Kiosk application.



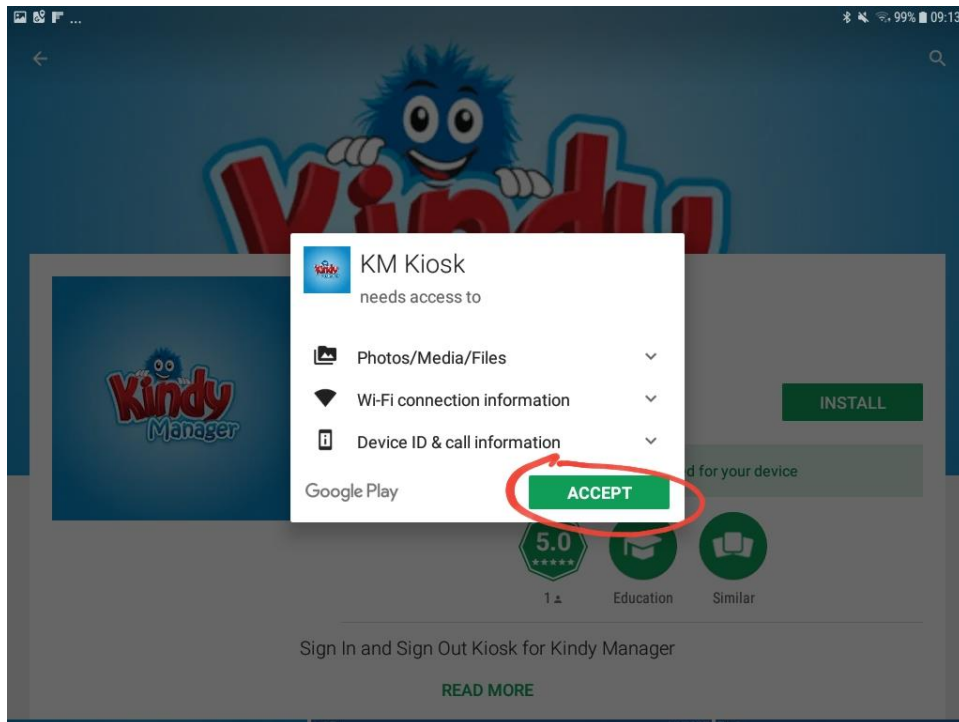
**Step 3:** Your screen should look something like this. Locate and Click on the “KM Kiosk” in the list provided. This is your new Kindy Manager Kiosk.



**Step 4:** Once you have clicked the “KM Kiosk” application from the list the Install option will open. Click on the Install Button to begin the installation of your new Kindy Manager Kiosk.



**Step 5:** Once you have click the install button an access prompt will appear, click accept. This will grant Kindy Manager Kiosk access to save its program files on your tablet and enable it to access your Wi-Fi connection.



**Note:** Installation should take only 20 seconds to 1 minute depending on your internet connection and signal strength.

**Step 6:** Your download and installation of “KM Kiosk” has now been completed. Welcome to your new **Kindy Manager Kiosk**.

# Apple Ipad

Five easy steps to installing your new Kindy Manager Kiosk on your Ipad.

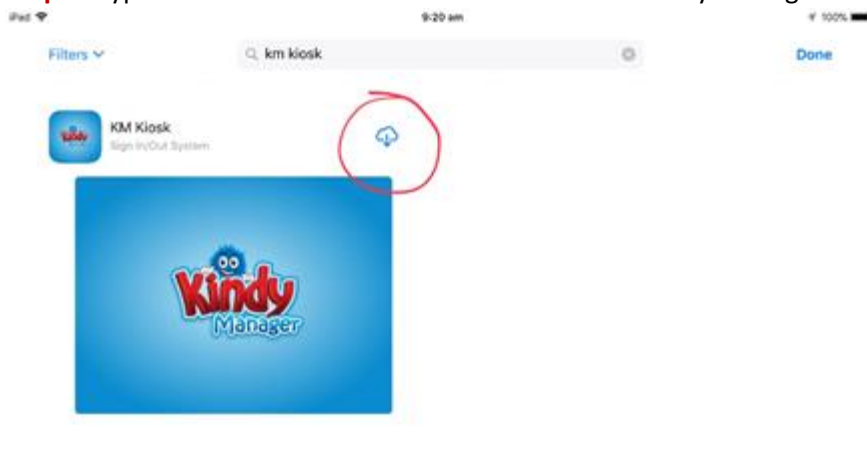
**Step 1:** Locate and Open your Ipad's App Store.



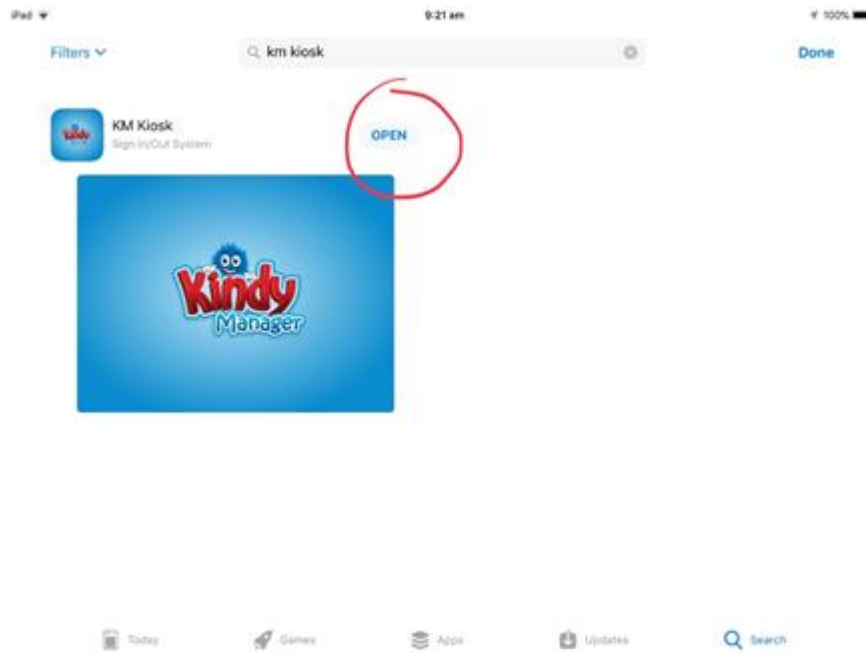
**Step 2:** Use your "Search" to locate the Kindy Manager Kiosk application.



**Step 3:** Type KM Kiosk in the Search Bar to locate the Kindy Manager Kiosk application.



**Step 4:** Once your App Store has located the application tap the download icon to begin the installation process of your new Kindy Manager Kiosk.



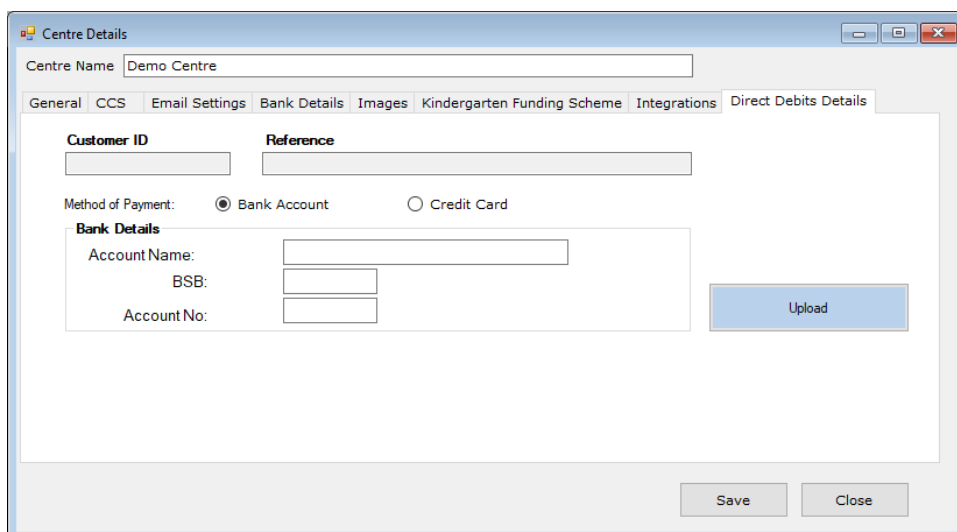
**Step 5:** Once installation has completed, click the Open button to launch your new Kindy Manager Kiosk application.

Note: Installation should take only 20 seconds to 1 minute depending on your internet connection and signal strength.

**Step 6:** Your download and installation of “KM Kiosk” has now completed. Welcome to your new **Kindy Manager Kiosk**.

## How to Register with Kindy Manager

### Auto Payment Setup – Direct Debits Details setup under Centre Details



The screenshot shows a software window titled "Centre Details" with a blue title bar. Inside, there's a tabbed interface with "Direct Debits Details" selected. The "Centre Name" field contains "Demo Centre". Below are two input fields for "Customer ID" and "Reference". The "Method of Payment" section has two radio buttons: "Bank Account" (selected) and "Credit Card". The "Bank Details" section has three input fields: "Account Name", "BSB", and "Account No". To the right of these fields is a blue "Upload" button. At the bottom of the window are "Save" and "Close" buttons.

When activating the **Kindy Manager Kiosk** you will need to setup your preferred method of payment. From the setting option on the blue tool bar select Centre Details. From Centre Details select the Ezi Debit tab, enter your preferred method of payment and press the upload button.

### Username and Password for Kiosk

A representative from the Kindy Manager team will contact you with your unique login Username and Password, if you do not receive this information please contact us.

Now you have completed downloading, installing and initial setup for KM Kiosk. To continue further please refer to the Getting Started Guide.